

SAAB 78

GLE

Learn how luxurious

In a world of cars where chrome and gadgetry seem to suffice as "luxury," the SAAB GLE restores the true meaning to the concept with a marvelous marriage of aesthetics, engineering and performance.

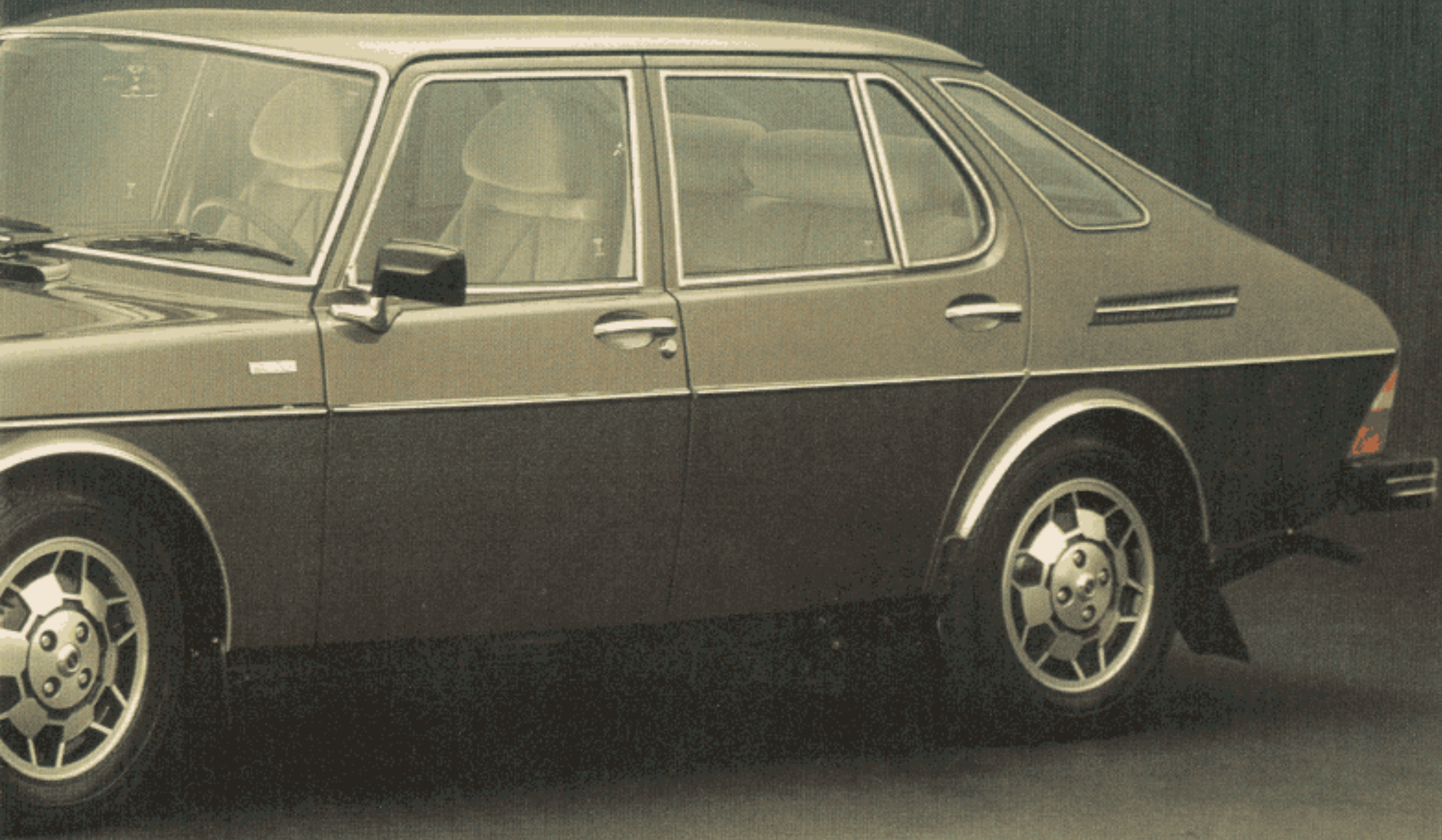
There is a solidness and commanding presence to the SAAB GLE. Its distinctive aluminum alloy wheels and metallic body colors, are bold declarations of good taste. And its interior, tailored in elegant velour, stands as a re-definition of the concept of comfort.

There are a number of other examples of intelligent luxury to be found in the SAAB GLE. Side view mirrors that one can operate electrically. Front seats which heat automatically when the temperature drops below 54° Fahrenheit. And individual headrests that substantially increase the comfort of all passengers.

The SAAB GLE is a superior road machine. It is the car for the driver who demands superior performance in the context of the proper definition of luxury.



a superior road machine can be.



Think of it as a racing car with family responsibilities.

The 5-door and 3-door SAAB GL are family cars from a family of racing cars.

Renowned as a superb piece of engineering and design, the SAAB GL is the efficient family workhorse. To pick up the kids at school. To take the family out. To cart home a big buy from an auction. (And when you re-

ally need it, you can lower the rear seat and have an enormous 53 cubic feet of trunk space.)

The other facet of the 5-passenger SAAB GL is its heritage as a high performance car. The SAAB GL 5-door and 3-door fastbacks house the identical engineering gems that enabled other SAAB cars

to be repeated winners at international rallies and SCCA competitions in this country.

The SAAB GL is a rare combination of power, comfort and spaciousness. It's the ideal car for the driver who won't shirk his family responsibilities. Nor give up the joy of driving a performance car.



EMS

Race it on Sundays. Drive it to the office on Mondays.

The SAAB EMS can be raced with a joyful passion on weekends. And on weekdays, it reverts to its other self; The performance car that's exciting to drive to the office. And to the supermarket.

Sired from years of SAAB engineering genius, and a racing heritage, the SAAB EMS is a power plant integrated with superior performance features. The four-speed man-

ual gearbox commands a 2-litre, fuel-injected overhead camshaft engine. Large Pirelli CN 36 tires provide extra traction. Bilstein gas-filled shock absorbers keep more tire on the road. The racing-like, small diameter steering wheel, combined with rack and pinion steering and front wheel drive, produce immediate steering response. And the tachometer allows you at a glance, to

achieve maximum engine performance. And all of it resides in a roomy 3-door fastback sedan body.

So much of the SAAB EMS portrays it as a top performance car. Like its front spoiler and sporty interior. Small wonder that the SAAB EMS is for racing buffs who need a car to commute. And commuters who like to drive a car engineered to race.





The SAAB Turbo is hailed as an engineering masterpiece. SAAB has taken the turbo power that dominates the big tracks—The Indianapolis 500 and Le Mans—and harnessed it to work at speeds you drive at everyday. The SAAB Turbo breakthrough is its ability to deliver 35% more torque at low (3500) r.p.m.'s. That's extra power when you really need it. Turbo power to pass. Turbo power to move you onto a highway.

The SAAB Turbo is unique on the American scene. It is the one car that combines the power of the future—Turbo power—with the many other major features that define SAAB as a consummate road machine. Superb performance features like front wheel drive. Rack and pinion steering. 4-wheel power-assisted disc brakes. And our advanced, Lambda Guard™ emission control system, that insures the meeting of even the most stringent anti-pollution standards.

The SAAB Turbo—in its stunning, roomy 3-door fastback body is the future. Drive one and get ready to unleash yourself.

The power



TURBO

of the future.



Technical Specification, 1978.

Engine type	4 cylinders in line
Piston displacement	121 cu in (1985 cm ³)
Bore/stroke	3.54 in/3.07 in (90 mm/78 mm)
Compression ratio	9.25:1
Net horsepower, SAE	115 hp (84 kW) at 5500 rpm
Torque	123 ft lb (167 Nm) at 3500 rpm
Valve train	Overhead camshaft
Injection system	Bosch continuous injection system
Engine oil capacity	3.7 U.S. quarts (3.5 litres)
Cooling system capacity	8.5 U.S. quarts (8 litres)
Fuel tank capacity	14.5 U.S. gals (55 litres)
Fuel requirement	Regular, 90 pump octane (94 RON)*
Battery	12V/60 Ah
Alternator (max. output)	55A/14 V
Starter motor	1.1 hp (0.8 kW)
Ignition type	Bosch breakerless
Clutch	Single disc, dry
Transmission	Transaxle, front under engine
Number of forward gears	4 Manual, 3 Automatic
Final drive ratio	3.89:1
Body construction	Unitized
Front suspension	Independent, double wishbone; Pivot mounted coil springs
Rear suspension	Lightweight rigid axle, with twin leading and trailing radius arms, panhard rod, coil springs
Shock absorbers, GL and GLE EMS	Hydraulic, telescopic Bilstein gas filled telescopic
Braking system	Dual diagonal circuits, power assist, 4-wheel disc
Wheel rims, GL models GLE and EMS	5Jx15" FHA pressed steel 5Jx15" FHA aluminum alloy (spare wheel of pressed steel)
Tire size, GL and GLE EMS	165 SR 15, steel belt 175/70 HR 15
Steering type	Rack and pinion
Steering, turns lock to lock:	
Manual transmission	4.1
Automatic transmission	3.6
EMS	3.4

*1) Premium, 94 pump octane (97 RON) required for trailer towing, mountainous driving or other extreme conditions.

Wheelbase	97.4 in (2473 mm)
Track, front	55.1 in (1400 mm)
rear	55.9 in (1420 mm)
Overall length, 2-d model	175 in (4450 mm)
3 and 5-d models	179 in (4550 mm)
Overall width	66.5 in (1690 mm)
Height, unladen	56.7 in (1440 mm)
Max. load length, 2-d model	67.6 in (1717 mm) Back seat folded
3 and 5-d models	71.7 in (1821 mm) Back seat folded
Trunk capacity, SAE, 2-d model	12.6 cu ft (356 litres)
3 and 5-d models	15.4 cu ft (435 litres) Parcel shelf removed
Trunk capacity, total, 2-d model	45.9 cu ft (1300 litres) Back seat folded
3 and 5-d models	53 cu ft (1500 litres) Back seat folded
Curb weight, approx., GL	2530-2750 lb (1150-1250 kg)
GLE	2690-2750 lb (1220-1250 kg)
EMS	2600 lb (1180 kg)
Gross vehicle weight, 2-d model	3660 lb (1660 kg)
3 and 5-d models	3810 lb (1730 kg)

Selected Western States.

Saab's sold in California, and in high altitude areas in the United States are equipped with the Bosch Continuous Injection System with Lambda control and a three-way catalyst. On these vehicles the following specifications are different from those listed above:

Compression ratio	8.7:1
Net horsepower, SAE	110 hp (81 kW) at 5500 rpm
Torque	119 ft lb (161 Nm) at 3500 rpm
Fuel requirement	Unleaded, 87 pump octane (91 RON)

- The manufacturer reserves the right to make changes at any time and without notice.
- A Tourist Delivery Plan is available. Your dealer will supply specific information.
- Exterior views of the 2-door model not shown in this brochure.

SAAB

Saab-Scania of America Inc.
Saab Drive
Orange, Connecticut 06477